

**DISCOVER**

# KPAX DISCOVER USER MANUAL



**KPAX SOFT**

246 bd de Reims – 59100 – Roubaix-France.

[sales@kpaxsoft.com](mailto:sales@kpaxsoft.com) , [www.kpaxsoft.com](http://www.kpaxsoft.com)

SIRET : 520 029 331 00011 RCS

Code APE : 4741Z

### **COPYRIGHT AND DUPLICATION STATUS.**

KPAX Company allows you to consult the content of this document on condition you enforce the author right and other property notes contained in the original document.

Any modification of this document content, whatever its form, any duplication or public presentation, any lecture, distribution or other use dedicated to business or public is forbidden.

In accordance with these terms of sales, any use of this content on a network computerized environment, whatever the purpose it is made for, is forbidden.

The content of this document is protected by the author rights. Any illegal uses of this contain brakes author right lows and trademarks.

<b>Date</b>	<b>Doc version</b>	<b>By</b>	<b>KPAX version</b>
05/17/2010	1.1	AM	1.3.8
06/29/2010	1.2	AM	1.3.12
07/18/2011	1.3	VL	1.3.16
09/06/2011	1.4	VL	1.3.17

## Summary of contents:

<b>I.</b>	<b>INTRODUCTION .....</b>	<b>4</b>
a.	Who is it for? .....	4
b.	What for? .....	5
c.	Pre-requirement .....	5
<b>II.</b>	<b>QUICK SCAN .....</b>	<b>6</b>
<b>III.</b>	<b>SCAN'S FUNCTIONS.....</b>	<b>11</b>
a.	Display the device list .....	11
b.	Add and Modify .....	11
c.	Suppress, re-scan .....	13
d.	Record, export .....	14
<b>IV.</b>	<b>ADVANCED SAN .....</b>	<b>15</b>
a.	IP Range.....	15
b.	Parameters .....	16
<b>V.</b>	<b>DISPLAY SETTING .....</b>	<b>17</b>
a.	Display, selection .....	17
b.	Columns groups.....	18
c.	Customised columns.....	18
b.	Search.....	18
e.	Asset ID .....	19
<b>VI.</b>	<b>EXTRAPOLATION AND COMPARISON .....</b>	<b>20</b>
a.	Extrapolation.....	20
b.	Comparison .....	23
<b>VII.</b>	<b>VARIOUS FUNCTIONALITIES .....</b>	<b>25</b>
a.	Costs .....	25
b.	Contracts .....	26
c.	Statistics .....	30
d.	Scan settings .....	31
<b>VIII.</b>	<b>Report.....</b>	<b>33</b>
<b>IX.</b>	<b>HELPDESK .....</b>	<b>36</b>

## I. INTRODUCTION

KPAX Discover is an analysis tool for printing and copy devices (printer, copier, MFP/MFD, Fax, scanner) which uses SNMP request, PDL and http on an IP network.

The software is contained and executed on a USB key. It does not require any installation on a specific work station.

### a. Who is it for?

#### ● Print & Copy Professionals

- Field sales team
- Pre-sales consultants
- Consultants dedicated to fleet audits
- Technical team

#### ● Company using printing equipment

- Technicians, engineers, internal IT
- Teams for IT user helpdesk/ Office
- Administrators for print fleet management/ Internal Helpdesk
- Purchaser in charge of consumables, printing equipments and services.

## **b. What for?**

- To analyze the state of a printing and copying device fleet.
- Identifying Devices :
  - Discover the total volumes.
  - Discover the devices alert status.
  - Discover the devices toner level.
- Qualify and size a client or existing prospect.
- Determinate the opportunity of a print audit :
  - Preparation of renewal phases or of the evolution of the printing and copying fleet
  - Reset online inventory printing equipment
  - Management of the availability of the equipment
  - Management of the total volumes done
  - Consolidation of the consumables needs
  - Management of the cost per page contract and of the Printing Services

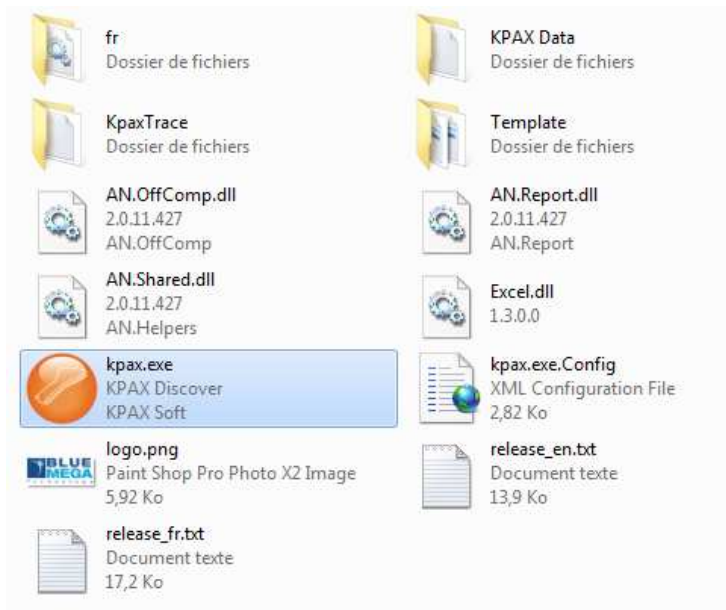
## **c. Pre-requirement**

- To use KPAX Discover, you need a computer equipped with :
  - Microsoft Windows XP
  - Windows 2003 server
  - Windows Vista
  - Windows 7 with Microsoft.Net Framework 2.0 SP1.

## II. QUICK SCAN

### Step 1 : Launch KPAX.exe

- Insert KPAX USB key in one of the free USB port of your computer.
- Wait for the auto-launch to initialize. Open the USB key into the Windows explorer.
- Double click on the file kpax.exe to launch the interface.
- 



Launch KPAX.exe

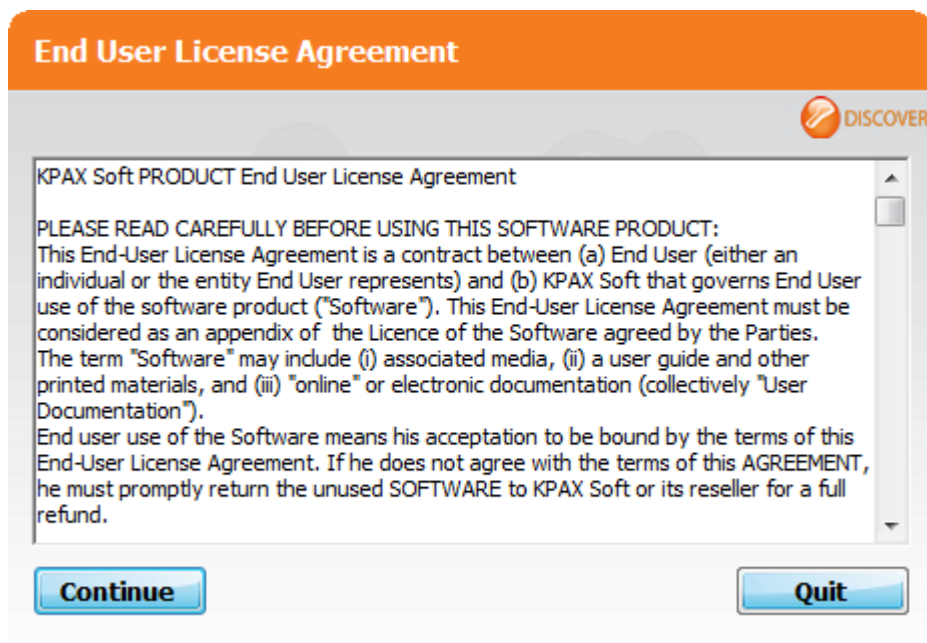


#### **Remark:**

If you encounter an error message which concerns your license, contact our technical helpdesk: [support@kpaxsoft.com](mailto:support@kpaxsoft.com)

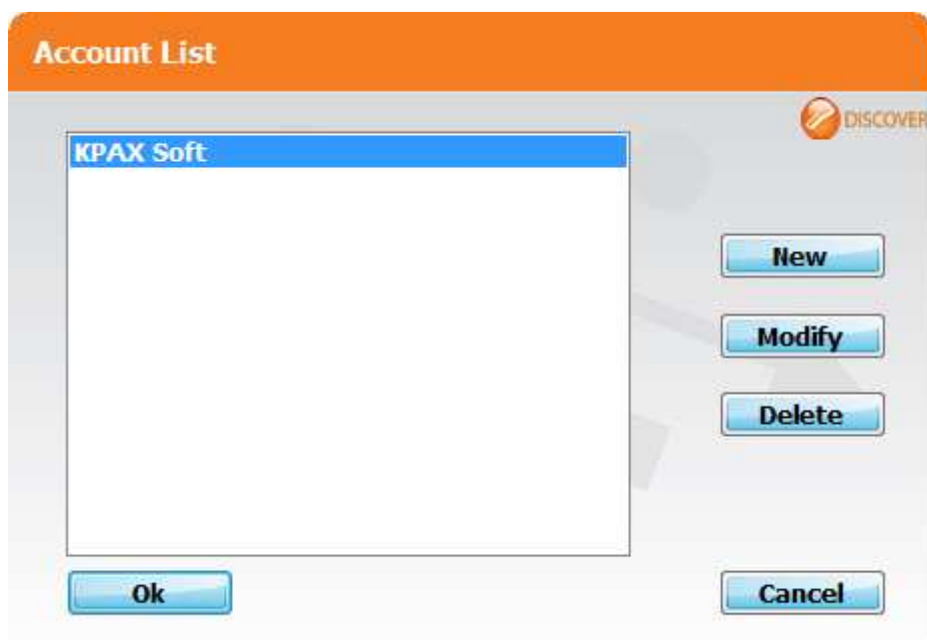
### Step 2 : Read and accept the user contract license

- You will have to read and accept the user license contract of the USB key:



User licence contract

Step 3 : Create or select an account to use KPAX Discover:



Select existing account



The 'Account' dialog box has an orange title bar. It contains four input fields: 'Name' with 'KPAX Soft', 'Contact' with 'Support', 'Email' with 'support@kpaxsoft.com', and 'Phone' which is empty. A 'DISCOVER' logo is in the top right. At the bottom are 'Ok' and 'Cancel' buttons.

[Create an account.](#)

Step 4 : Update your key.

- When a new version is available, KPAX Discover will automatically ask you if you would like to update.

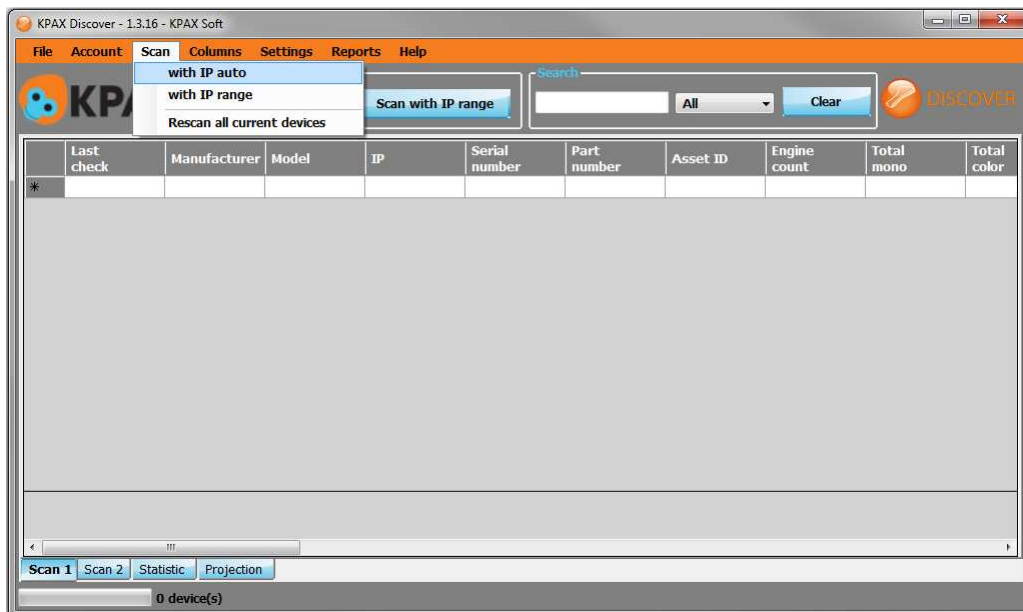


[Update your key](#)



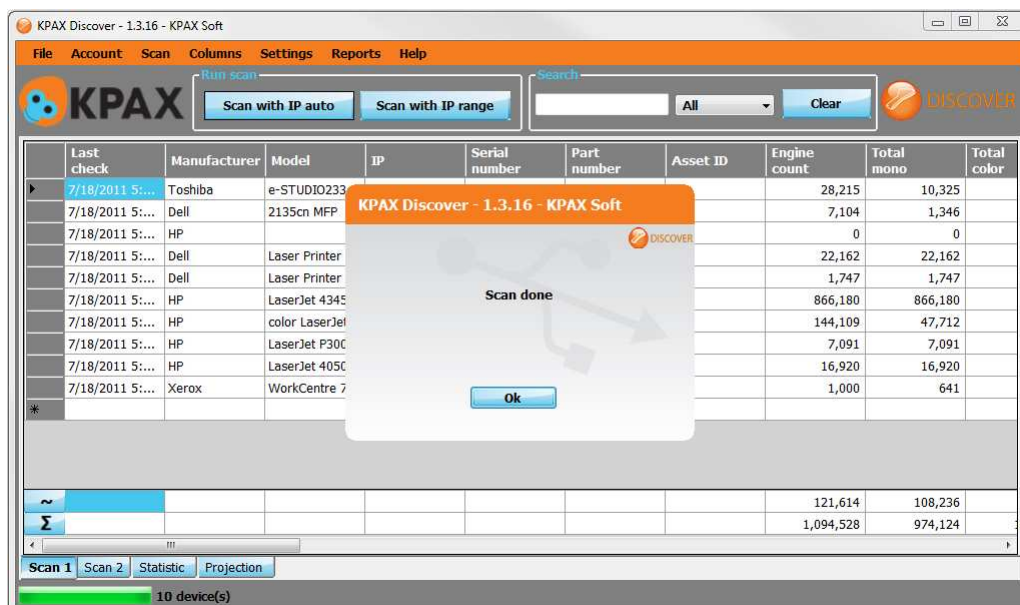
## Step 5 : Launch a scan.

- Select « Scan » and Click to launch a quick scan.



Launch a scan

- If you have various network cards on your computer, you will have to choose one of them. Once your scan is over, the list of the printing devices found by KPAX discover is displayed.



KPAX Scan



Remarks:

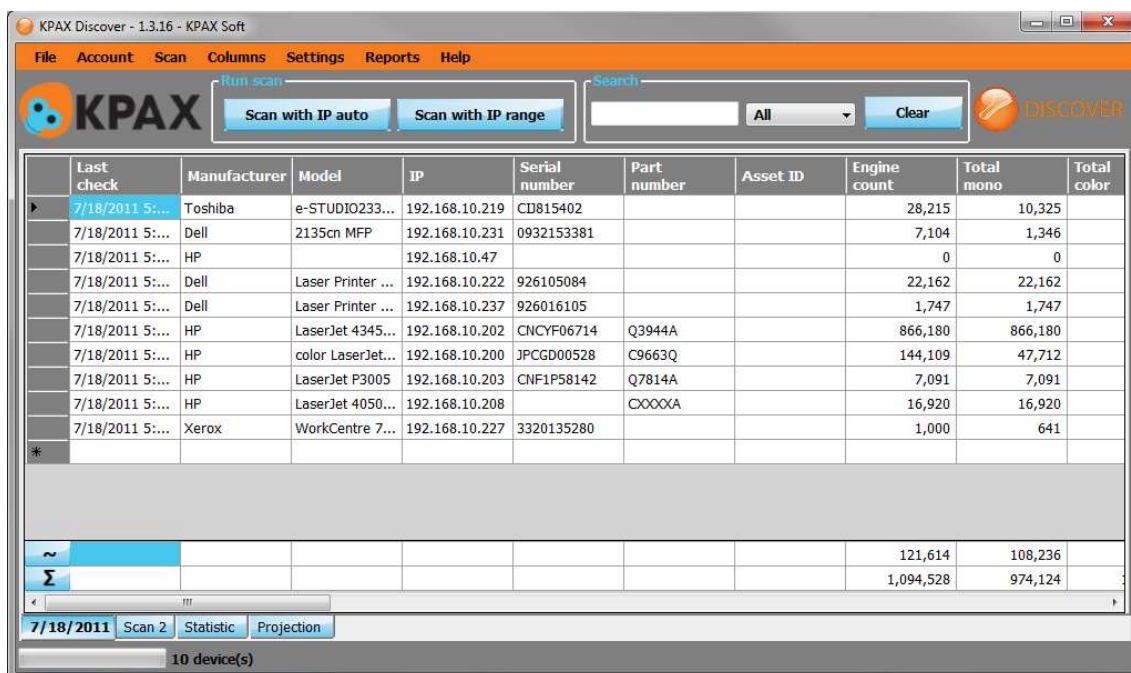
The Quick Scan implements a SNMP request broadcast on the IP address range of the network and of the network card selected. To implement a scan on different networks, more restricted or more important, the function address range must be used.

### III. SCAN'S FUNCTIONS.

#### a. Display the device list

Step 1 : Display the device list :

- Once your scan is over, the list of the devices found by KPAX Discover is displayed.



KPAX Discover - 1.3.16 - KPAX Soft

File Account Scan Columns Settings Reports Help

Run scan:   Search:  All

Last check	Manufacturer	Model	IP	Serial number	Part number	Asset ID	Engine count	Total mono	Total color
7/18/2011 5:...	Toshiba	e-STUDIO233...	192.168.10.219	CD815402			28,215	10,325	
7/18/2011 5:...	Dell	2135cn MFP	192.168.10.231	0932153381			7,104	1,346	
7/18/2011 5:...	HP		192.168.10.47				0	0	
7/18/2011 5:...	Dell	Laser Printer ...	192.168.10.222	926105084			22,162	22,162	
7/18/2011 5:...	Dell	Laser Printer ...	192.168.10.237	926016105			1,747	1,747	
7/18/2011 5:...	HP	LaserJet 4345...	192.168.10.202	CNCYF06714	Q3944A		866,180	866,180	
7/18/2011 5:...	HP	color LaserJet...	192.168.10.200	JPCGD00528	C9663Q		144,109	47,712	
7/18/2011 5:...	HP	LaserJet P3005	192.168.10.203	CNF1P58142	Q7814A		7,091	7,091	
7/18/2011 5:...	HP	LaserJet 4050...	192.168.10.208		COXXXA		16,920	16,920	
7/18/2011 5:...	Xerox	WorkCentre 7...	192.168.10.227	3320135280			1,000	641	
*									
Σ							121,614	108,236	
							1,094,528	974,124	

7/18/2011 Scan 2 Statistic Projection

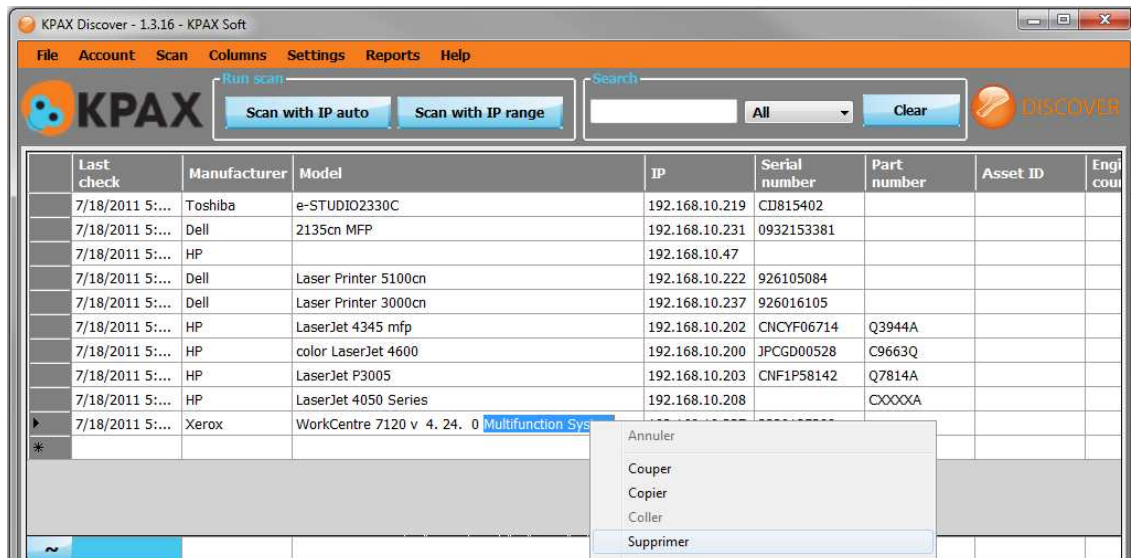
10 device(s)

Device list

#### b. Add and Modify

Step 1 : Modify all the information contained in the different cases of the board.

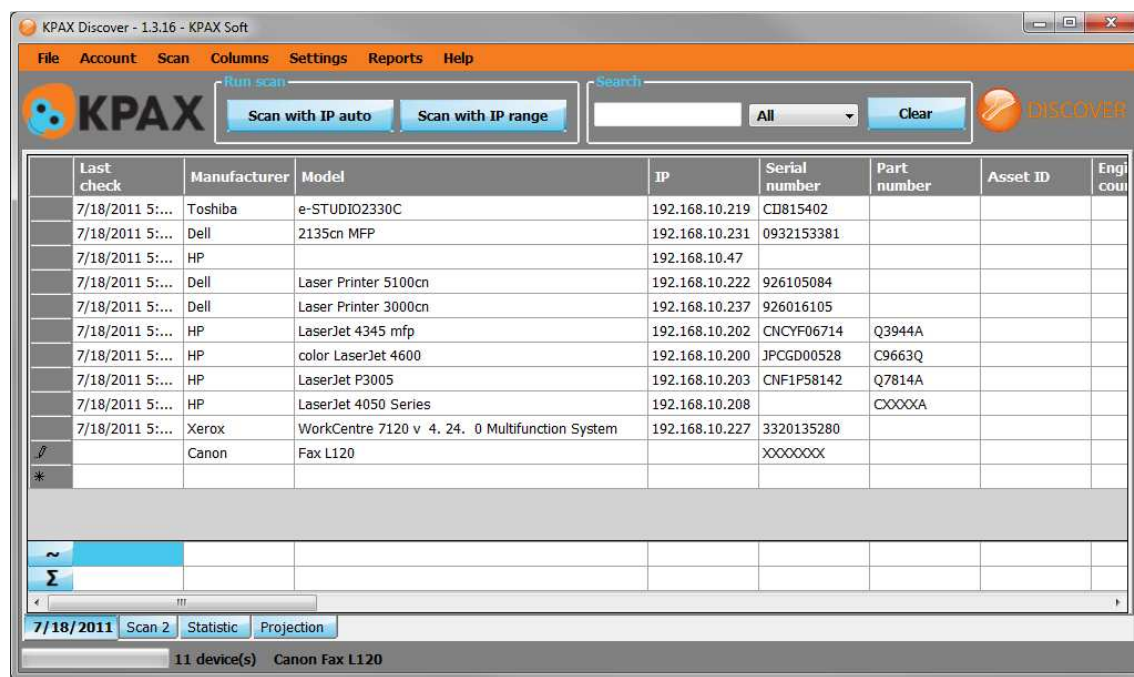
- For example you can correct the incorrect data found by the device.



Modify datas

## Step 2 : Add a device

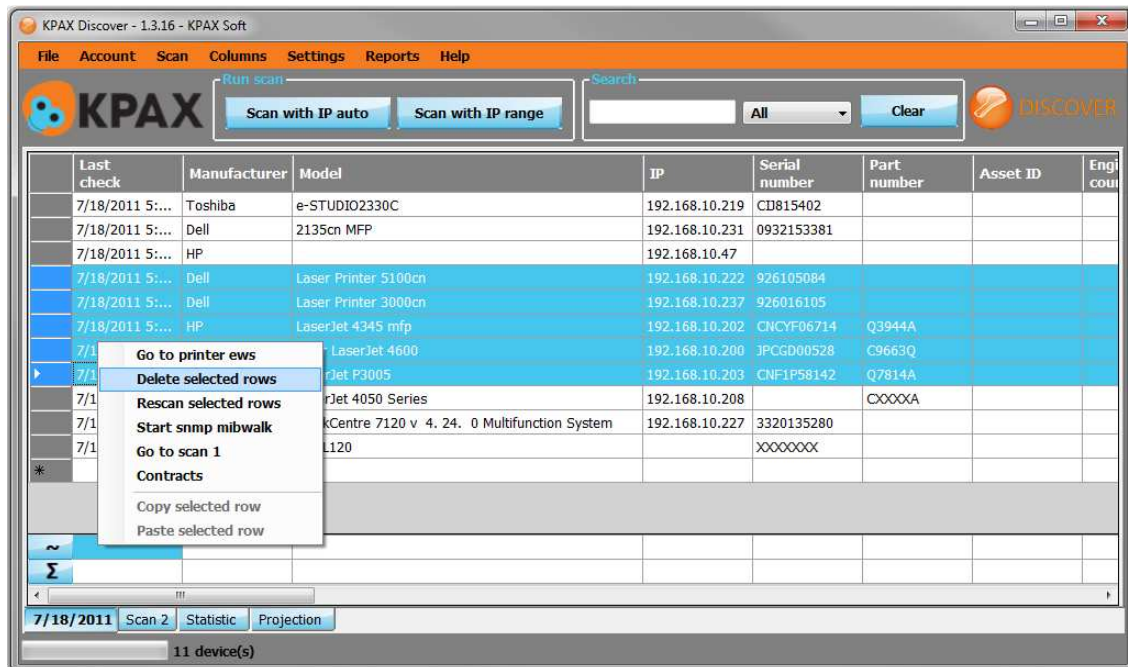
- Type the necessary information into the last row. Complete the network scan by adding unconnected devices such as : fax machine, photocopier, local printers, etc...



Add devices

### c. Suppress, re-scan

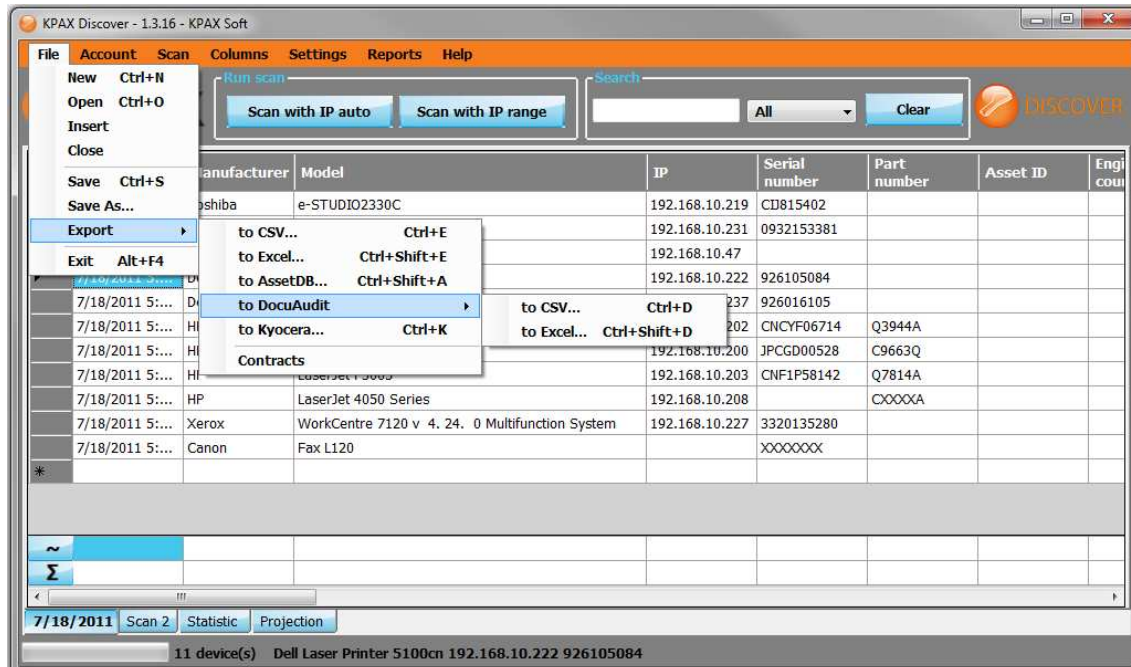
Step 1 : Suppress or re-scan lines to make sure that they contain the rights data.



Line suppression

#### d. Record, export

Step 1 : Once your scan is complete, you can export it for various application, or record it.



#### Exportation formats

- The scan safeguard is done under KPAX extension. This format is used :
  - To record scans.
  - To exchange the scan from a KPAX key to another one.
  - As an importation format of datas in KPAX Design tools.
  - CSV export generates documents that can be re-worked under Microsoft Excel.
  - The other formats are specific to some application such as Asset DB, DocuAudit...
  - The export records datas of the tab where you are standing.
  - You can record the scan 1, scan 2 or the content of the tab : « Extrapolation and Comparison ».

#### IV. ADVANCED SAN

In some IT environment, security is often strengthened and the infrastructure network

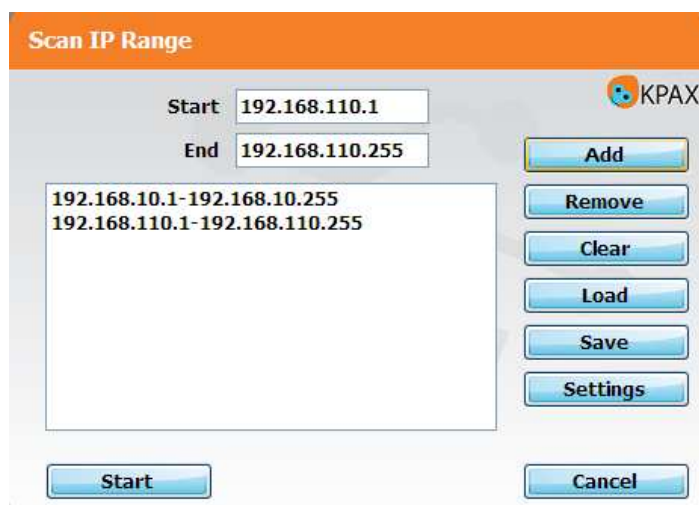
more complexe.

To manage these constraints, KPAX Discover offers the possibility to set parameters to pick up information on various network architectures types.

##### a. IP Range

Step 1 : Customise the IP Range address that you want to scan :

- Go on the « scan menu ».
- Click on IP Range.
- During a quick scan, the Post IP Address determines the IP RANGE scanned. In some companies, the printers are in a network different from the one of the computers. It is necessary to specify the IT Range that contains the printers.



- From this window :

- add or suppress a specific range
- suppress the whole ranges

IP Range



##### Remark :

When a large IP Range is requested, the scan will take longer to finish and the system will indicate that the range is too big IP ranges can be shared between keys by exporting and then importing.



For example: Choose « Start to launch the scan of the IP range added ». When you add an IP range for the first time, it allows you to save the range in an excel file.

## b. Parameters

KPAX Discover tool is based on the protocol SNMP (Simple Network Management Protocol).

This communication protocol allows network equipment to be managed, and any problems diagnosed remotely.

In most company networks, the access to the data on the networks equipment is open. But, some networks administrators secure the access.

In this case, you have to record the new SNMP community name.



The image shows a dialog box titled "Scan settings (Application)" with an orange header bar. In the top right corner of the dialog is a "DISCOVER" button with a magnifying glass icon. The dialog is divided into three sections: "SNMP", "Concurrent connections", and "Parts". The "SNMP" section contains three fields: "Get community name" with the value "public", "Time-out (ms)" with the value "300", and "SNMP retries" with the value "1". The "Concurrent connections" section contains two fields: "Number of connections" with the value "20" and "Time-out (ms)" with the value "250". The "Parts" section contains a checkbox labeled "Scan Parts information" which is checked. At the bottom of the dialog are three buttons: "OK", "Defaults", and "Cancel".

Scan settings

- The timeout deadline can be setting.
- When the network is slow, increase the timeout deadline.
- When a lot of devices need to be scanned, reduce this timeout deadline.
- The number of test corresponds to the number of network connection attempts to each device.



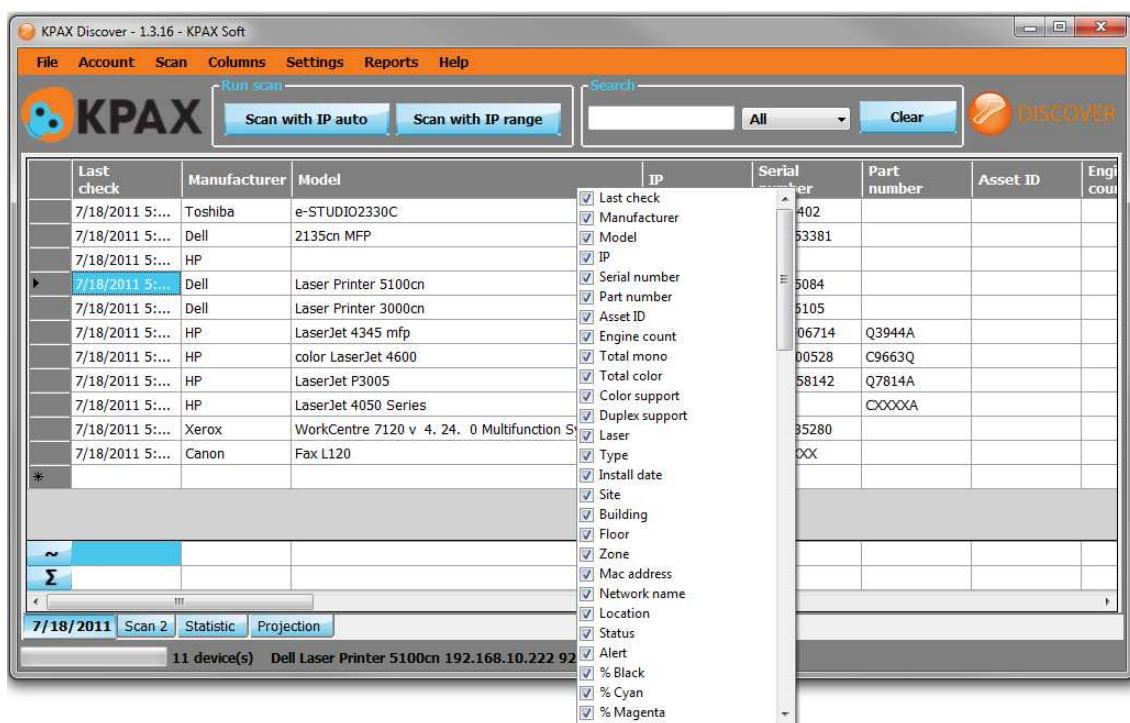
- The number of competitive connections corresponds to the number connection attempts implemented by the key at the same time.
- These parameters can only be implemented when an IP range is specified.
- You can restore, at any time, the default values by clicking on “Default”.
- You can decide to scan Parts information, Drum, Maintenance kit, drum... If you do not want to scan parts, the scan will be faster.

## V. DISPLAY SETTING

The display board is customisable. You can easily hide the columns that are not relevant (for example), an inventory file.

### a. Display, selection

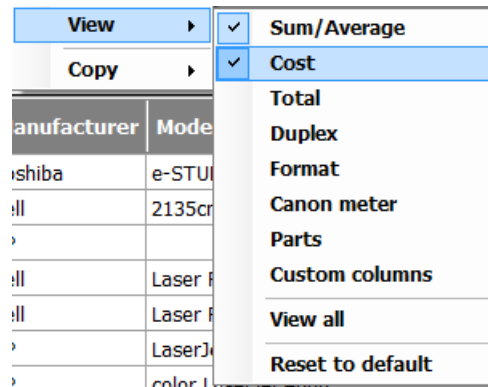
- Modify data clicking on the column to remove it, slide it, or hide it (if you are not interested in this column).
- Sort out specific lines by right clicking on one column, ticking in or ticking off the column to display.



Column display

## b. Columns groups

- Some columns are organized, such as columns corresponding to the various printing format, cost, line, sum and average. The groups of columns can be hidden by unchecking the column group.

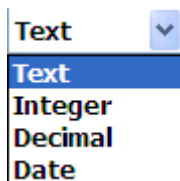


Columns group

## c. Customised columns

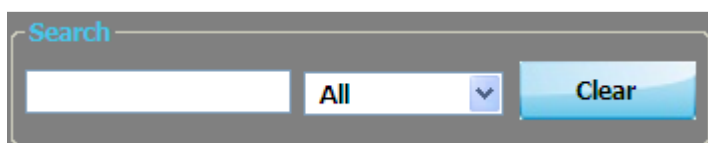
### Step 1 : Create your own column :

- Go to menu Parameters. Choose Columns: you can create up to 50 columns, of different types.



Columns type

## b. Search

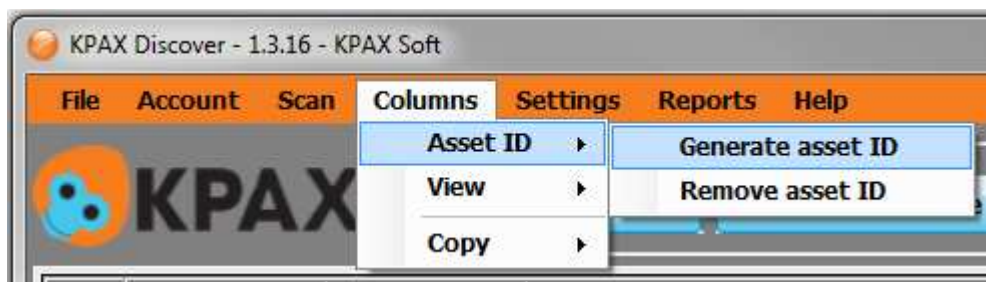


Search box

- Implement search, or filter specific data. For example, display the devices of a specific brand.

#### e. Asset ID

Step 1: Allocate to the scanned device a unique login : « Asset ID ».



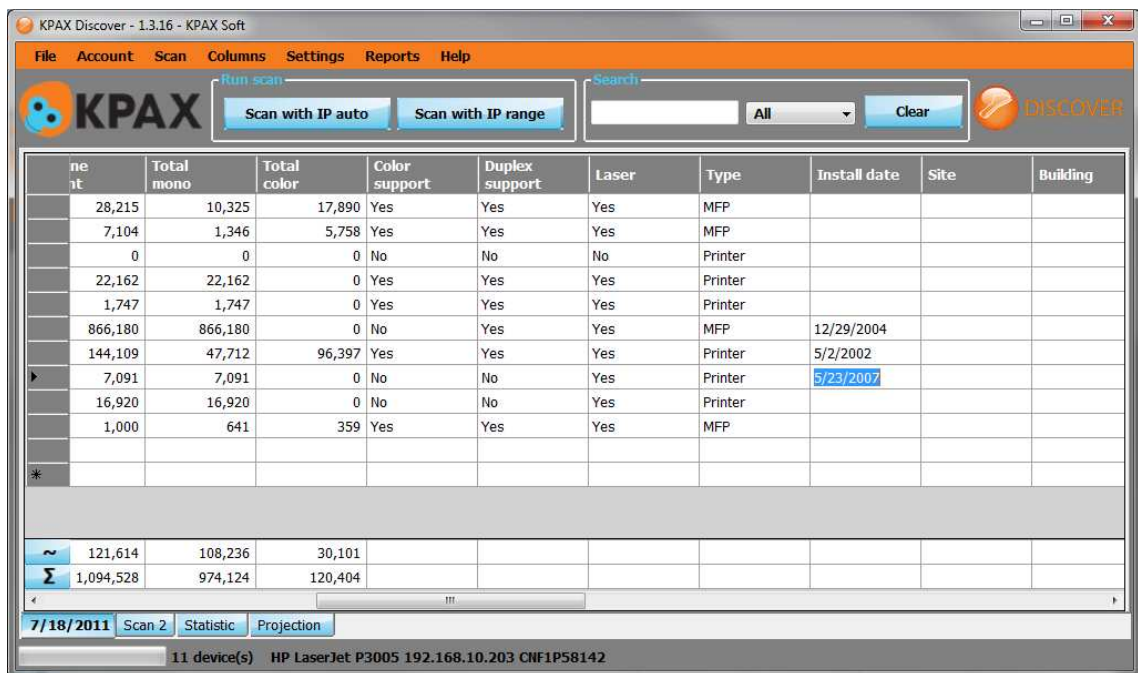
- This Asset number is unique. Each device corresponds to an inventory number used when imported into KPAX Design.

## VI. EXTRAPOLATION AND COMPARISON

### a. Extrapolation

The extrapolation consists of calculating the daily, monthly & annual volume from: the total device volume and its installation date.

#### Step 1: Installation date:



ne it	Total mono	Total color	Color support	Duplex support	Laser	Type	Install date	Site	Building
28,215	10,325	17,890	Yes	Yes	Yes	MFP			
7,104	1,346	5,758	Yes	Yes	Yes	MFP			
0	0	0	No	No	No	Printer			
22,162	22,162	0	Yes	Yes	Yes	Printer			
1,747	1,747	0	Yes	Yes	Yes	Printer			
866,180	866,180	0	No	Yes	Yes	MFP	12/29/2004		
144,109	47,712	96,397	Yes	Yes	Yes	Printer	5/2/2002		
7,091	7,091	0	No	No	Yes	Printer	5/23/2007		
16,920	16,920	0	No	No	Yes	Printer			
1,000	641	359	Yes	Yes	Yes	MFP			
*									
~	121,614	108,236	30,101						
Σ	1,094,528	974,124	120,404						

7/18/2011 Scan 2 Statistic Projection

11 device(s) HP LaserJet P3005 192.168.10.203 CNF1P58142

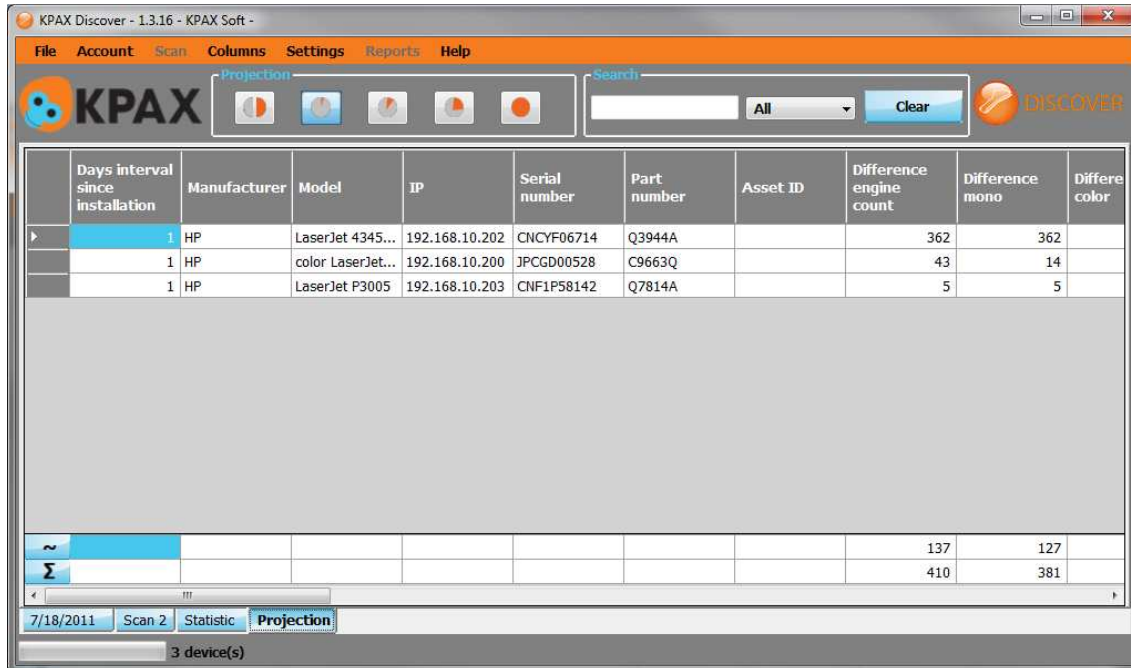
#### Installation date



#### Remark:

Devices without an installation date will not be displayed in the extrapolation. You can manually type this installation date to display it in the tab extrapolation.

## Step 2: Projection



Days interval since installation	Manufacturer	Model	IP	Serial number	Part number	Asset ID	Difference engine count	Difference mono	Differe color
1	HP	LaserJet 4345...	192.168.10.202	CNCYF06714	Q3944A		362	362	
1	HP	color LaserJet...	192.168.10.200	JPCGD00528	C9663Q		43	14	
1	HP	LaserJet P3005	192.168.10.203	CNF1P58142	Q7814A		5	5	
Σ							137	127	
							410	381	

7/18/2011 Scan 2 Statistic **Projection**

3 device(s)

### Projection

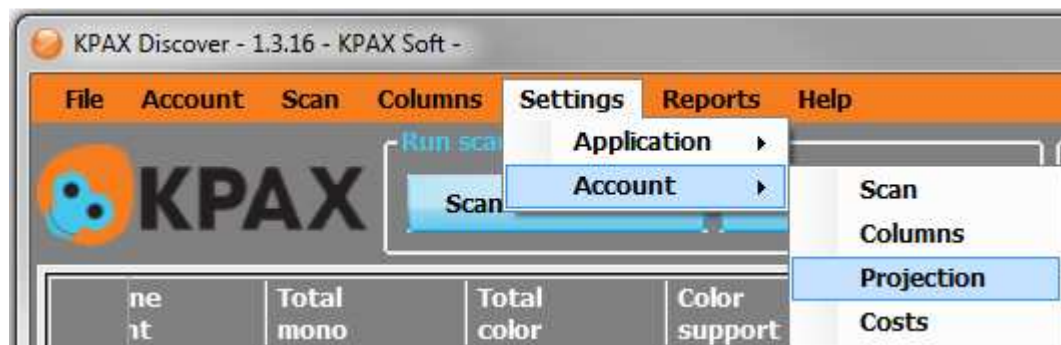
## Step 3: Projection mode:



- The extrapolated volume is displayed by default for one day. You can modify this parameter in the menu « Extrapolation ».

#### Step 4: Extrapolation parameters:

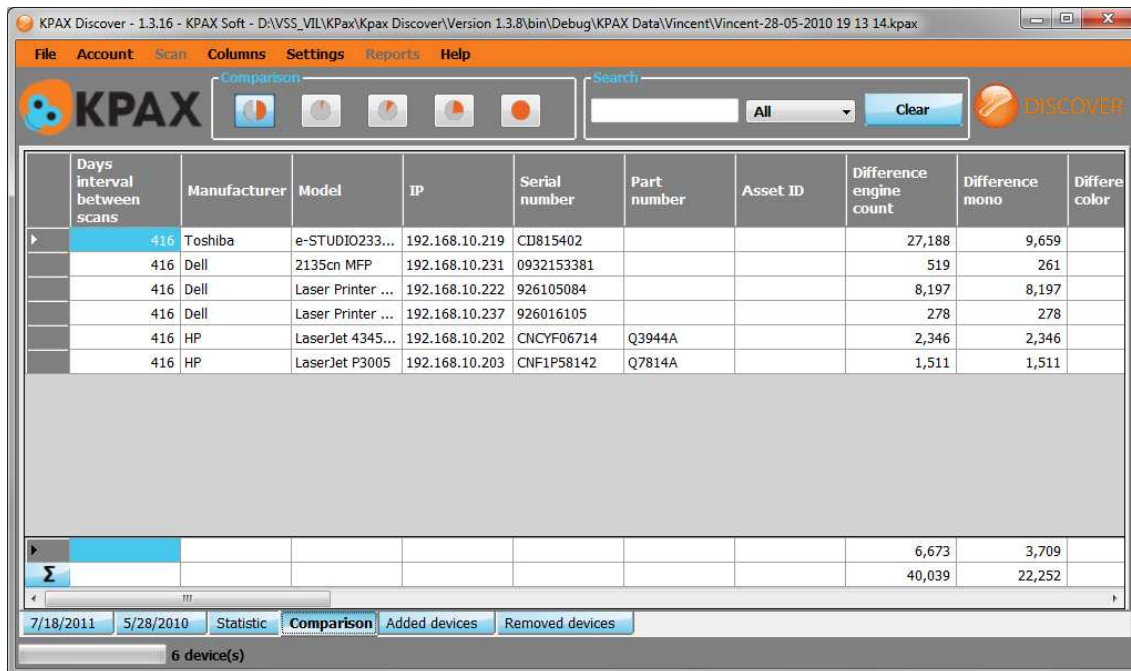
The monthly and annual extrapolation is done on the working days of a specific period. Modify the values by default in the parameters menu:



Extrapolation parameters.

## b. Comparison

### Step 1: Comparison between two scans.



Days interval between scans	Manufacturer	Model	IP	Serial number	Part number	Asset ID	Difference engine count	Difference mono	Difference color
416	Toshiba	e-STUDIO233...	192.168.10.219	CD815402			27,188	9,659	
416	Dell	2135cn MFP	192.168.10.231	0932153381			519	261	
416	Dell	Laser Printer ...	192.168.10.222	926105084			8,197	8,197	
416	Dell	Laser Printer ...	192.168.10.237	926016105			278	278	
416	HP	LaserJet 4345...	192.168.10.202	CNCYF06714	Q3944A		2,346	2,346	
416	HP	LaserJet P3005	192.168.10.203	CNF1P58142	Q7814A		1,511	1,511	
							6,673	3,709	
Σ							40,039	22,252	

7/18/2011 5/28/2010 Statistic **Comparison** Added devices Removed devices

6 device(s)

Comparison between two scans

- If you have already implemented a previous scan, you can open it in a second tab « Scan2 ». The Extrapolation tab will compare both scans.
- To display the Comparison between the two scans, choose the parameter: « Real Extrapolation ». Devices analyzed in the two scans appear in this tab.
- Other devices absent in the first scan and analyzed in the second scan are displayed in the tab « Added machines ».
- The devices present in the first scan and absent in the second scan are displayed in the tab « suppress machine ».

## Step 2: Consult the data of the different scans.

- Select one device to consult the data of the different scans. - Right click on « one device ».

	Days interval between scans	Manufacturer	Model	IP
▶	130	Dell	1600n	192.168.10.220
	130	Dell	1600n	192.168.10.231
	130	Dell	Laser Printer ...	192.168.10.222
	130	Dell	1600n	192.168.10.236
	130	Dell	Laser Printer ...	192.168.10.237

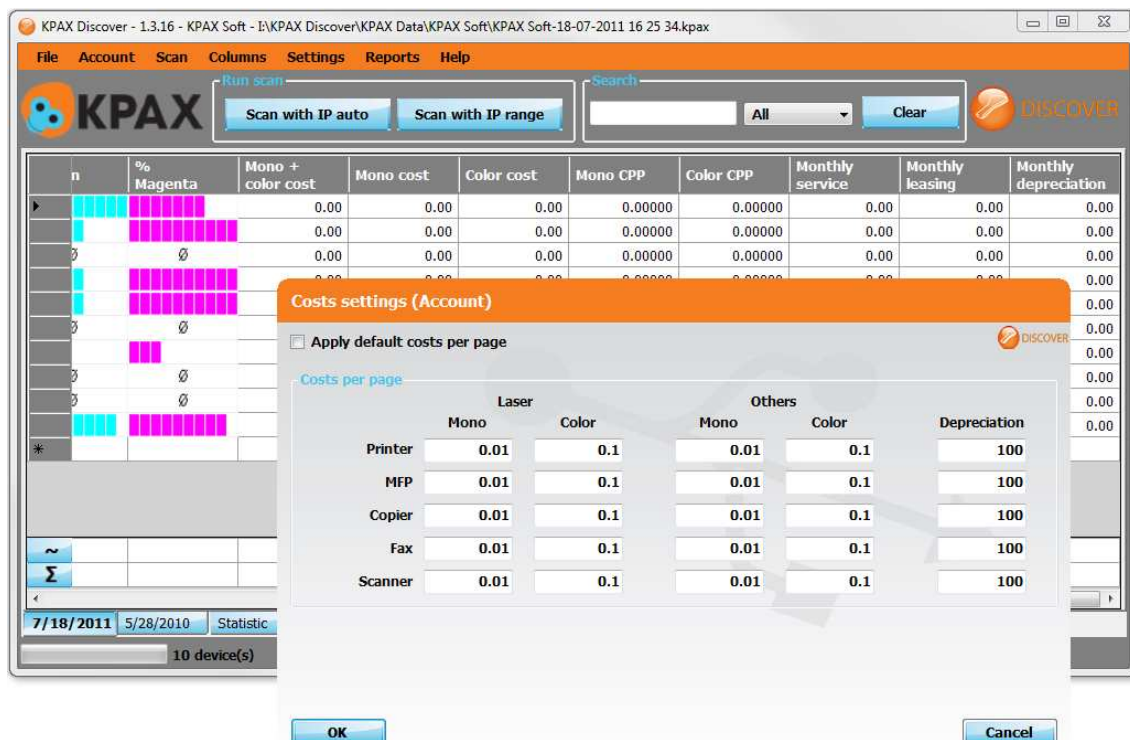
Click on the « scan selected ».



## VII. VARIOUS FUNCTIONALITIES

### a. Costs

- With KPAX Discover, you can assimilate the printing costs to the volumes of the devices scanned.
- Costs are determined in Cost per page.  
They are differentiated according to the printing technology, its type, and the color data.
- You can modify the parameters of the cost per pages:
  - Click in the menu « Parameters ».
  - Click on « Cost ».
- You can specify cost parameter per page according each client account.
  - Click on « account menu ».
  - Click on « Parameter current account ».
  - Click on « Costs ».

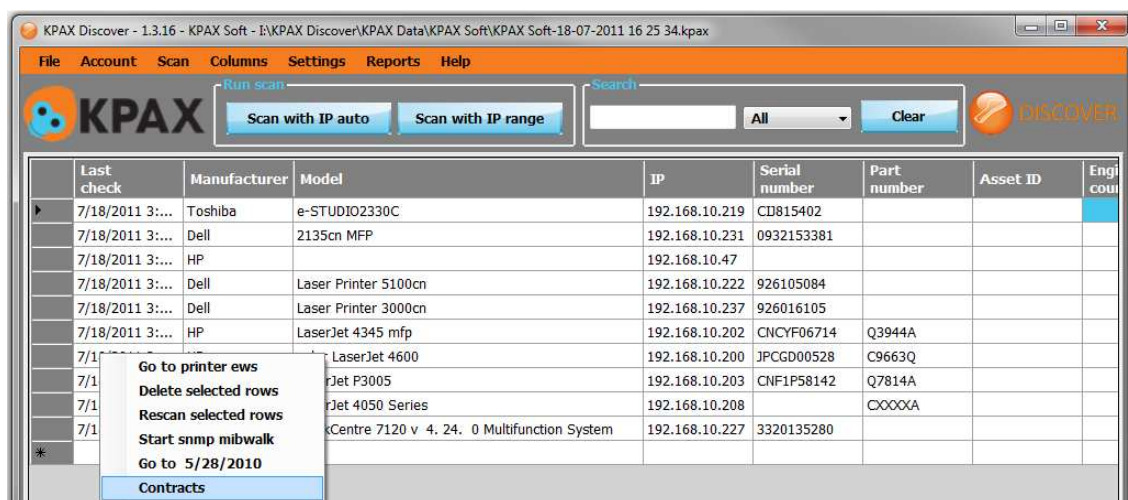


Cost parameters

## b. Contracts

### Step 1: Find the contract

- A contract management tool by device is available on the KPAX Discover Key. This tool is available for one peripheral at once; it is not possible to create one contract for several devices.
- To find this contract :  
Right click on the contextual menu of one device, right click.  
Click on « Contracts » to open the contract page.

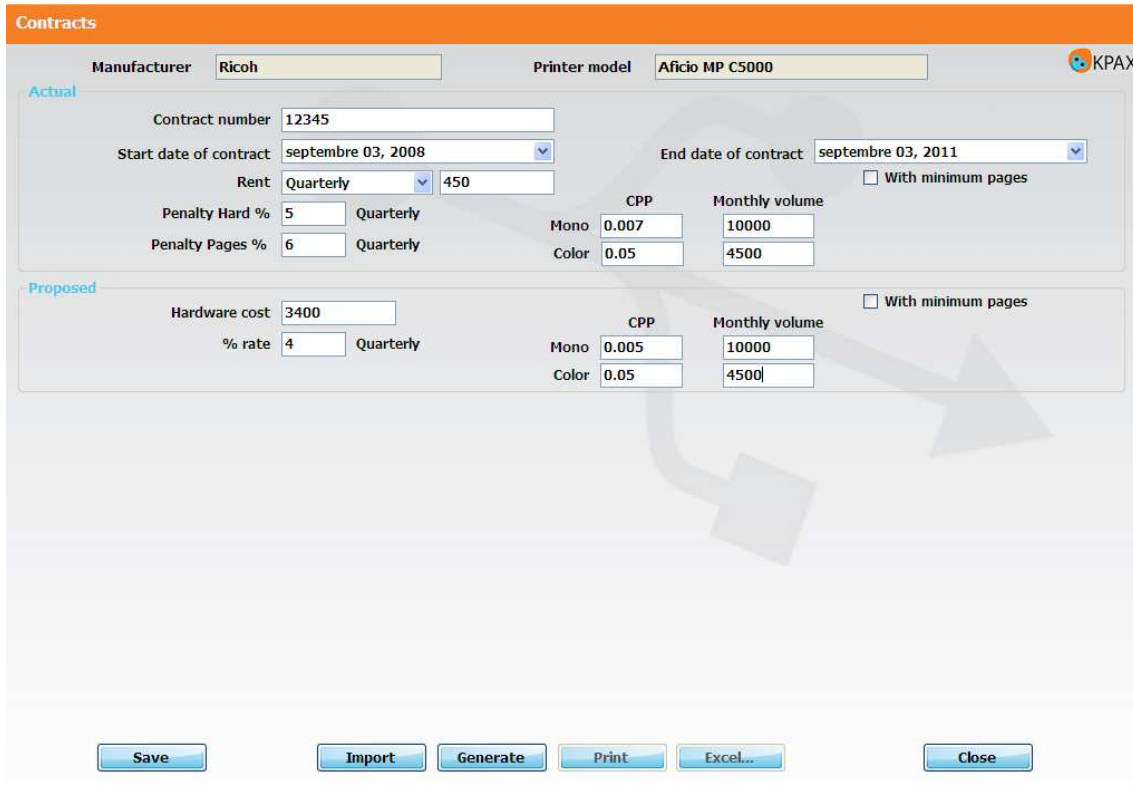


[Go to contract](#)

### Step 2 : Launch the comparison

- When both scans are opened, or if a scan contains the total volume of the device and its installation date, the monthly volume is first filled. To create the comparison current contract/ proposed contract, click on « Generate ».  
A board will appear displaying the main information of the current and proposed contract, covering a period from the current date to the contract end date is created

- The purpose is to determine when the replacement of the contract is profitable for the client.



**Contracts**

Manufacturer: Ricoh Printer model: Aficio MP C5000

**Actual**

Contract number: 12345

Start date of contract: septembre 03, 2008 End date of contract: septembre 03, 2011

Rent: Quarterly 450

Penalty Hard %: 5 Quarterly

Penalty Pages %: 6 Quarterly

CPP: Mono 0.007 Color 0.05

Monthly volume: 10000

☐ With minimum pages

**Proposed**

Hardware cost: 3400

% rate: 4 Quarterly

CPP: Mono 0.005 Color 0.05

Monthly volume: 10000

☐ With minimum pages

Buttons: Save, Import, Generate, Print, Excel..., Close

Example of contract

### Step 3 : Display the detailed comparison.

- Click on « Detailed »:
- to display the detailed comparison
- to display the current monthly cost value and monthly cost proposed with repurchase, according to the period, under graphical form.

- Contracts can be recorded, imported if one example has already been recorded, printed or exported to an excel file.

Data		Graph				
	Date	09/03/2010	12/03/2010	03/03/2011	06/03/2011	09/03/2011
Details	Quarters remaining	5	4	3	2	1
	Current quarterly cost	1,335.00	1,335.00	1,335.00	1,335.00	1,335.00
Summary	Global penalty cost	7,053.00	5,642.40	4,231.80	2,821.20	1,410.60
	Proposed quarterly cost without buyout	1,105.00	1,105.00	1,105.00	1,105.00	1,105.00
	Proposed quarterly cost included buyout	1,387.12	1,330.70	1,274.27	1,217.85	1,161.42

Save Import Generate Print Excel... Close

Comparison current/proposed contract



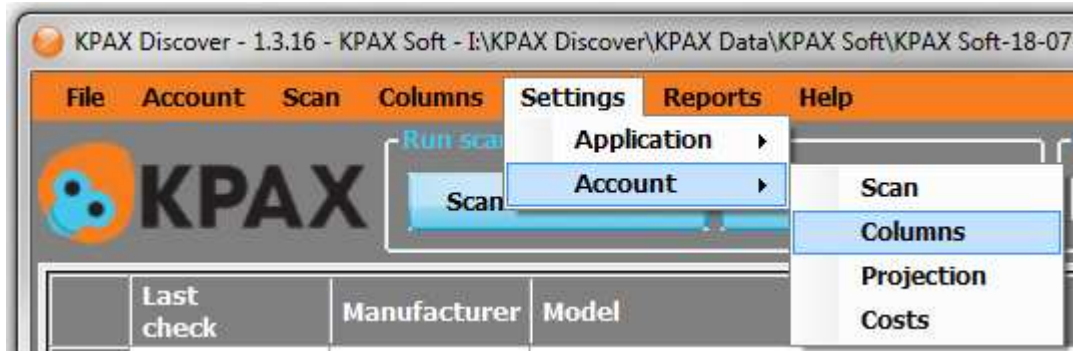
#### Remarks:

With KPAX Discover, a contract is effective on one single device at once. If you want to use a multi-devices contract, you have to use the KPAX Design application.

## Accounts management

### Step 1 : Create account to manage different networks, sites and clients.

- Go to the menu Account to create, modify or suppress an account without restarting KPAX Discover.



Account management

- You can specify customized parameters for the current account such as: scans parameters, customized columns, costs dedicated to this account or extrapolation parameters. When you modify these customizable parameters for a data account, this is saved for future use.

### c. Statistics

#### Step 1 : Graphical statistics

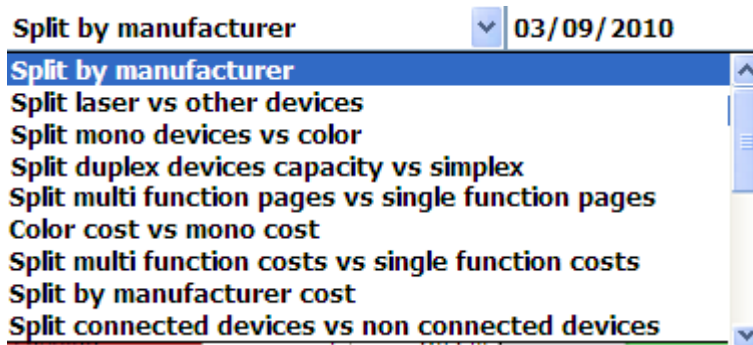
- Graphical statistics are available in KPAX Discover. To display them :
  - Launch a « scan »
  - Select the tab “Statistics”



Statistics menu

- Several statistics are available:
  - With a pie chart
  - Displayed with or without legends on one or two screens, to compare two scans opened.

#### List of the available statistics:

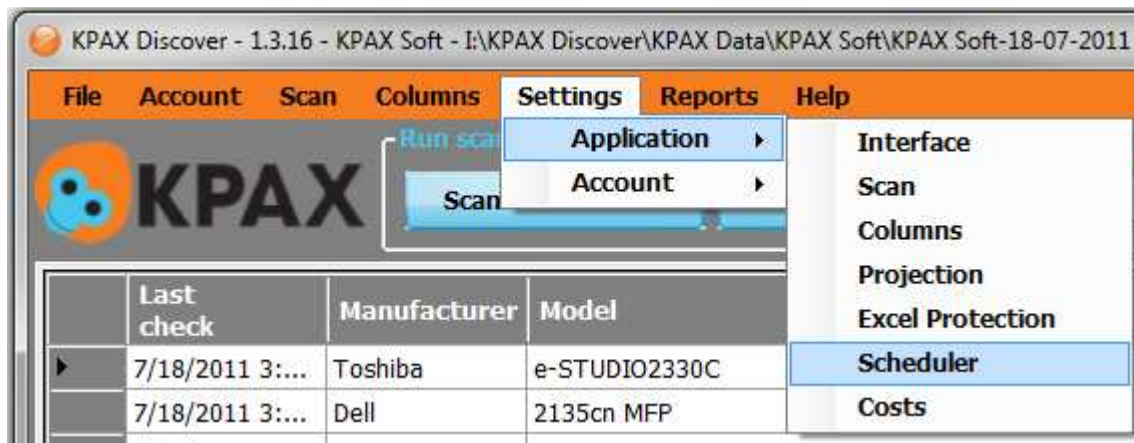


Statistics list

#### d. Scan settings

##### Step 1 : Set a scan periodically.

- To display the Setting menu:
  - Go in the menu « Parameters »
  - Click on « Scheduler »



Scheduler menu



#### Remark:

Specify first the right IP range address.  
The scan setting picks up the open scan parameters.

##### Step 2: Use scan results.

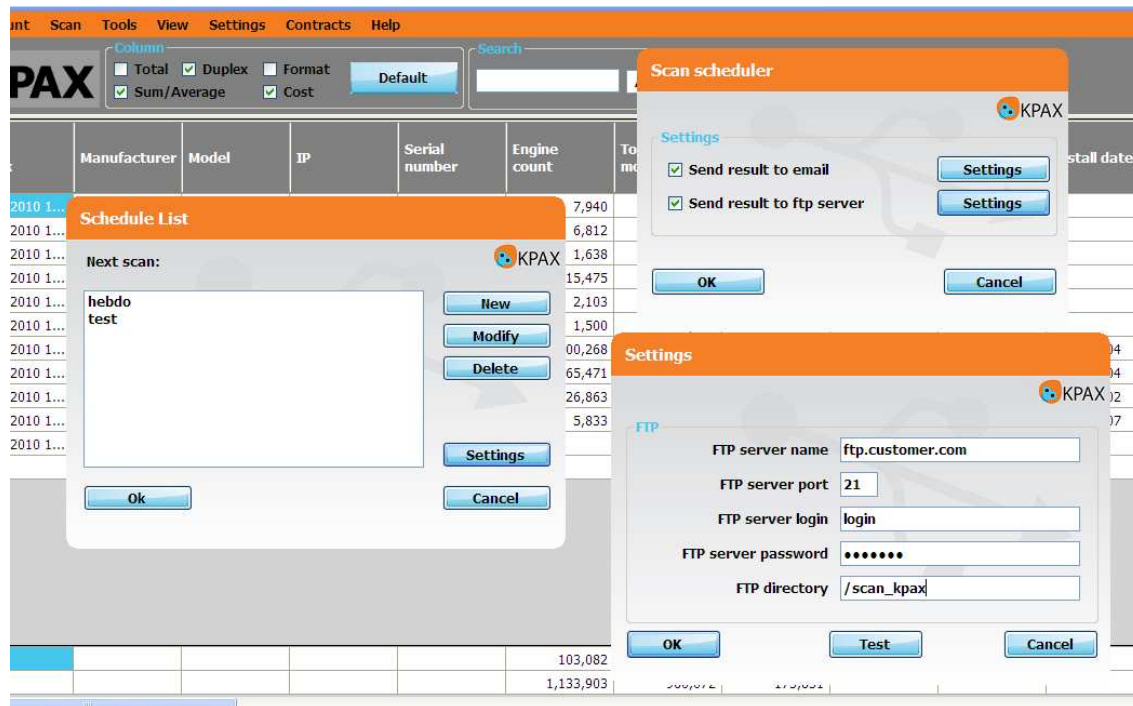
- Once the scan is complete:
  - Choose manually a scan from a folder
  - send the scan result on a FTP site, or by mail.



Scan setting

### Step 3: Test parameters

- Test the FTP and mail shipment clicking on the button « Test ».



### Setting parameters



#### Remarks:

You can set only one scan for a single account at once. If you want to set a scan for several accounts at once, use the application KPAX Manage.



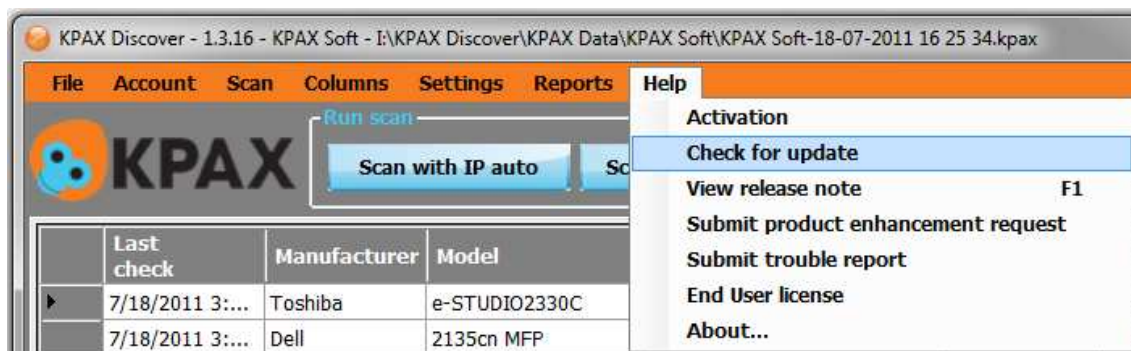
## e. Update

- KPAX Discover update is proposed regularly. These updates bring a better accuracy of the scan, minor bug correction and add new functionalities.
- When you are connected to internet, the application checks the updates available upon launch.
- You can also check manually the updates.

- Click on the menu « Help ».

- Click on « Check Updates ».

In the same Menu, you can consult the information on the current version, and the modification brought on the new versions.



[Consult the information of the version](#)

## VIII. Report

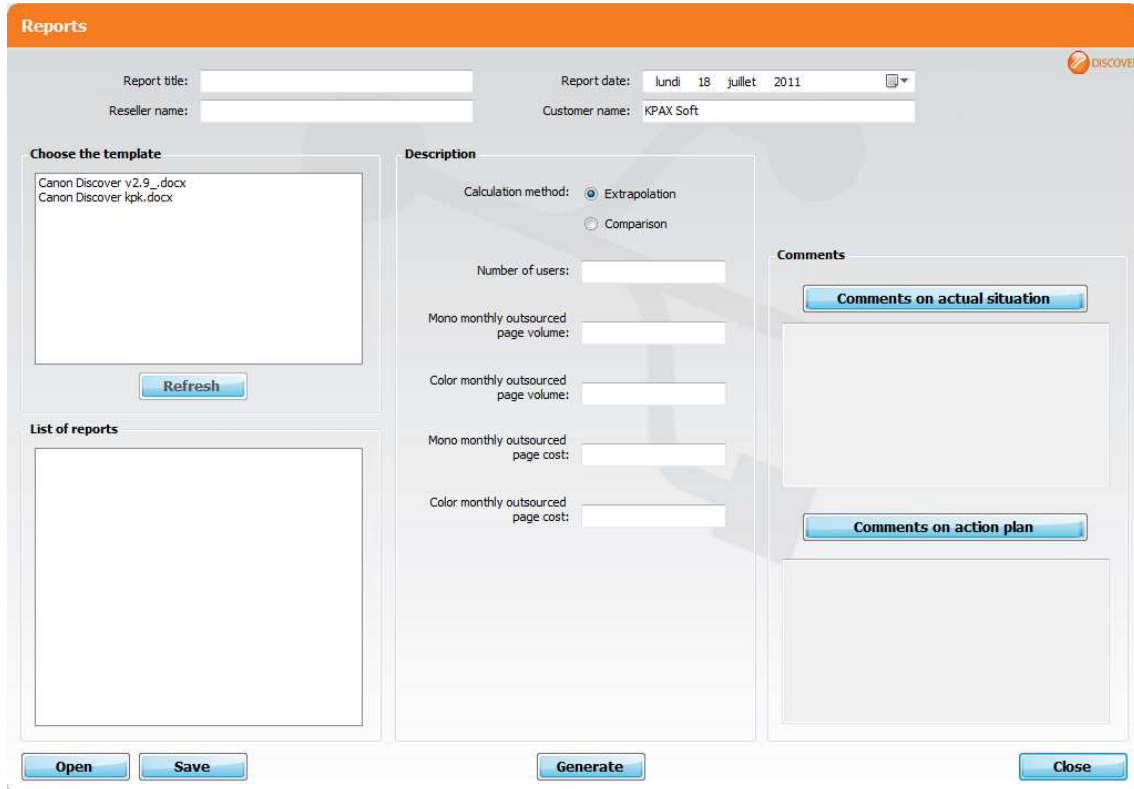
A new reporting feature appears in version 1.3.16. This feature requires a new license key from your KPAX Discover. To do this, go to the "Help" then "Activate" to fulfill a license key with this function. Contact your dealer to see if you have this feature.

A new menu is now available, the menu "Reports".



The first menu allows you to assign the default costs defined in the interface. This assignment is based on the type of equipment, printers, copiers, MFP, Fax, or Scanner.

Once these costs allocated by default, you can of course change it. Then you can run the reports window



The screenshot shows the 'Reports' window with an orange header. It contains several input fields and sections:

- Report title:** A text input field.
- Report date:** A date picker showing 'lundi 18 juillet 2011'.
- Reseller name:** A text input field.
- Customer name:** A text input field pre-filled with 'KPAX Soft'.
- Choose the template:** A list box showing 'Canon Discover v2.9\_.docx' and 'Canon Discover kpk.docx'. Below it is a 'Refresh' button.
- Description:** A section with radio buttons for 'Calculation method' (selected: 'Extrapolation', unselected: 'Comparison'). Below are input fields for:
  - Number of users:
  - Mono monthly outsourced page volume:
  - Color monthly outsourced page volume:
  - Mono monthly outsourced page cost:
  - Color monthly outsourced page cost:
- Comments:** Two text areas with buttons above them: 'Comments on actual situation' and 'Comments on action plan'.
- List of reports:** A large empty text area.
- Buttons:** 'Open', 'Save', 'Generate', and 'Close' are located at the bottom.

Here are the information you can enter in this interface.

- Start with a title for your report.
- Enter the name of the dealer
- Customer name is prefilled with the name of the account on which you work.
- If you have scans of two open then you can use the calculation method by comparison. If you have only one scan to open, then the only authorized method of extrapolation will be subject to the dates of installation are correctly filled in the scan. If this is not the case, then the device will be ignored in the analysis.
- If you have data on the outsourcing print please specifies.
- You have a text box that allows you to comment on the current situation.
- You have another text box that allows you to comment on the action plan.
- Finally, you must select a template from which the report will be generated.

## Template document

KPAX Discover report generation is based on models. A model contains a set of bookmarks that will be replaced by the calculated values. You can create your own templates from existing models with known bookmarks. Do not delete the bookmarks, or you also delete the data when generating the report. Only unused bookmarks can be removed from your models

## IX. HELPDESK

- For each problem met with a KPAX Discover key, contact the Helpdesk by emailing : support@kpaxsoft.com

